

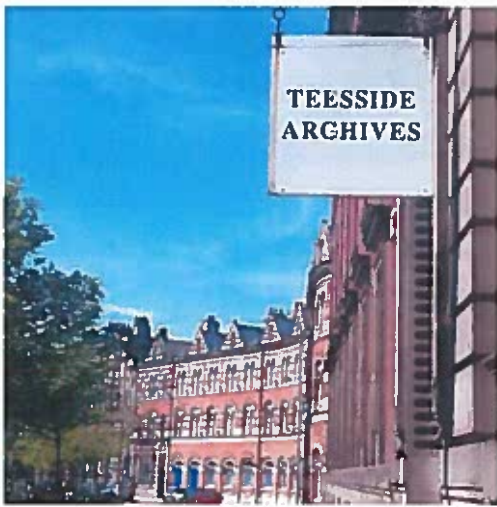
# Teesside Archives Future Accommodation



# Current Situation

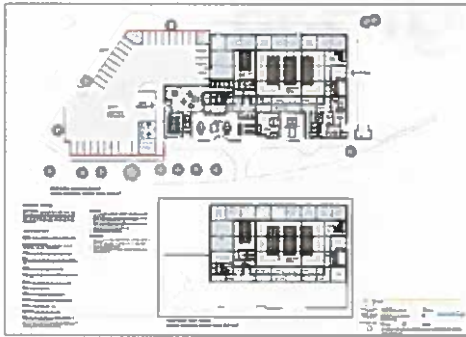
- Unsuitable building
- Manageable in the short term
- Unsustainable in the long-term
- Agreed by DOPs that a new home needed





# Options

- Various options explored
  - Former HMRC Document Storage Facility
  - Ayresome Industries Warehouse
  - Extension of Central Library
  - New build at Middlehaven
  - Old Town Hall





# Lack of Progress

- Very specific requirements
  - Floor loadings
  - Heating systems
- Purchasing a suitable building too expensive
- Building a new facility needs grant funding
- Need to minimise the Local authority contribution
- Scheme needs wow factor to attract external funding

# Current Options

- Pursue a new build at Middlehaven
- Joint development of a History Centre

# Middlehaven New Build

- Likely to cost £7m+
- Available land
- Ability to provide wow factor
- Potentially viable option



New archive building - Dudley



# Joint History Centre

- Teesside University as lead partner
- Need for joint archive storage and visitor facilities
- Similar to Hull History Centre
- Project capacity and resources
- Shared costs
- More likely to connect with external funders
- More likely to minimise LA costs
- Timescales driven by Teesside University



# Next Steps

- Discussions with Teesside University
- Consultation with stakeholders
- Development of outline plans
- Decisions on deliverability
- Presentation back to DOPs

# Questions?

